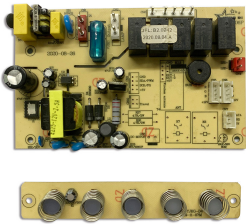


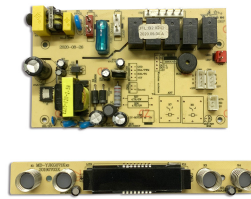
Control panel series



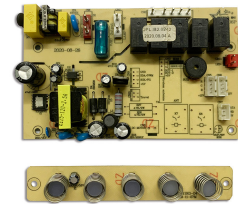
Control panel series



Control panel series



Control panel series



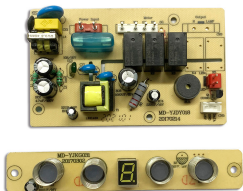
这是一套抽油烟机专用的机械式按键控制面板套装，属于 Control Panel Series（控制面板系列）产品，由上方的按键操作面板和下方的电源控制主板组成，是家用抽油烟机的核心控制部件。

上方的按键面板带有透明保护外壳，配备实体按键，标注了电源（Power）、低档（Lo）、中档（Med）、高档（Hi）和照明（Light）功能标识，操作直观、手感清晰，适合厨房油污环境长期使用。下方的控制主板集成了电源转换电路、继电器控制模块，可将家用 220V 交流电转换为设备所需低压电，并通过继电器控制风机的高低速运转、照明电路的通断，同时具备过流、过压保护功能。板载 RoHS 环保认证标识，符合出口标准，采用通用接口设计，适配多数主流品牌抽油烟机，是生产配套与售后维修的通用替换配件。

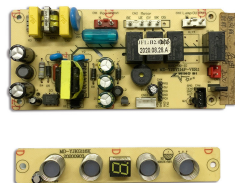
This is a set of mechanical key control panel specially designed for range hoods, belonging to the "Control Panel Series". It consists of a key operation panel (top) and a power control mainboard (bottom), serving as the core control component of household range hoods.

The upper key panel is equipped with a transparent protective shell and physical keys, labeled with Power, Lo (Low Speed), Med (Medium Speed), Hi (High Speed), and Light functions. It features intuitive operation and clear tactile feedback, suitable for long-term use in oily kitchen environments. The lower mainboard integrates power conversion circuits and relay control modules, converting household 220V AC power into the low voltage required by the device. It controls the fan speed (low/medium/high) and lighting circuit via relays, while providing overcurrent and overvoltage protection. With RoHS certification, it meets international export standards. Featuring a universal interface design, it is compatible with most mainstream brand range hoods, making it a universal replacement accessory for production matching and after-sales maintenance.

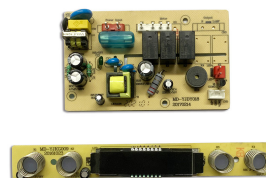
Control panel series



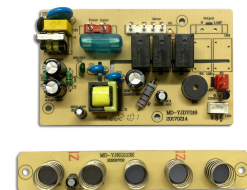
Control panel series



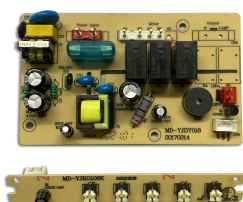
Control panel series



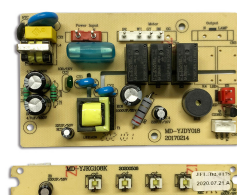
Control panel series



Control panel series



Control panel series



Control panel series



Control panel series

